

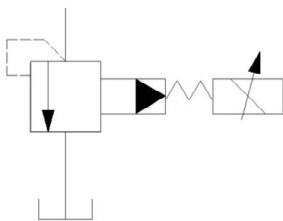
DBE(M)

DBE(M) SERIES ELECTRIC-HYDRAULIC
PROPORTIONAL RELIEF VALVES

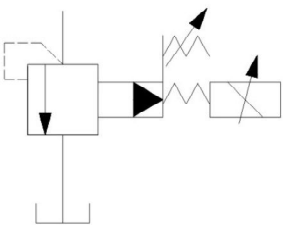


PRODUCT SERIES

HYDRAULIC SYMBOLS



DBE



DBEM

ORDERING CODE

DBE		E	10	5X / 31	Y	D24	
-----	--	---	----	---------	---	-----	--

Proportional
relief valves

without maximum pressure
relief function = no code
with maximum pressure
relief function = M

No code = for external control electronics
E= with integrated electronics

Size
size 10= 10
size 20=20
size 30=32

component series 50 to 59 = 5X
(50 to 59: unchanged installation and connection dimensions)

seal material
M= NBR Seals
suitable for mineral oil
V= FKM Seals

Supply voltage of electronics
D24=24VDC

External pilot oil drain = Y
unloading port X, external pilot oil drain = XY

Pressure stage
up to 5mpa = 5
up to 10 mpa= 10
up to 20 mpa = 20
up to 31 mpa = 31
up to 35 mpa = 35